

ADJUSTABLE DOOR FRAME INSTALLATION INSTRUCTIONS

15/1

Fig.1 Packaging contains :

door frame elements, hinges, clamps, two-element connector, screws, Allen key.
Individual elements are pre-drilled in connection areas.

Needed tools:

hammer, screwdriver, spirit level, struts, wedges, polyurethane foam, wood glue and silicone.



ATTENTION! It's not allowed to install a door frame into the wall using construction mortar. Installation should be done in dry and good air conditioned areas, after completion of any other works as painting, floor installation, plastering etc. All elements of door frame have to be checked before assembling. All visible surface and construction defects submitted after installation won't be recognised as the claim and are not covered with the conditions of guarantee! Permissible interior humidity – max 60%, temperature – 10 to 30°C. It's not allowed to use protective tapes. The door frame can be covered with protective tapes at the sole risk and responsibility of installation team or the user.

Opening in the wall:

- Before installation of the door frame, the appropriate wall openings (dimensions) have to be prepared. Dimensions of wall opening should be equal to the outer width and outer height of the door frame (in the catalogue and in the accompanying drawings identified as s3 and h3) plus 15 mm on each side for application of polyurethane foam **Fig.11**.
- Remove all roughness and clean the wall opening in order to achieve better adhesion of PU foam.

Door frame:

- NOTE : Before starting installation, first remove angle architraves from two vertical and one horizontal element of the door frame. How to make : hold the middle part of the frame together with angle architrave, which is fixed with a glue, and firmly pull the second angle architrave, starting from the bottom part of the frame.
- Place in the right position two vertical and one horizontal element, keeping the right angle (90°) in the corners **Fig.4**.
- Apply a small amount of wood glue on the surface of connected elements **Fig.3**.
- After installing and screwing of the clamps, fasten horizontal and vertical elements with two-element connector. Then screw them up starting from longer side of connector **Fig.4**.
- Mount the hinge socket **Fig.5**. Put the hinges into the socket holes and fasten them with fixing screws.

Adjustable angle architrave:

- Prepare the architrave for assembling in the same way as the door frame.
- It is possible to reduce the nominal coverage of the wall by a door frame of 15 mm by shortening of the angle architrave's "tongue" (along the milling in the shape of the letter „V"). This procedure must be repeated in case of the middle element of a door frame by cutting off its part from the side of the wall (along milling in the shape of the letter „V").
- Narrow surfaces of door frame elements are to be joined with clamps. While screwing the clamp, please control the accuracy of connections from the foiled side **Fig.7**.

Installation of door frame in the wall:

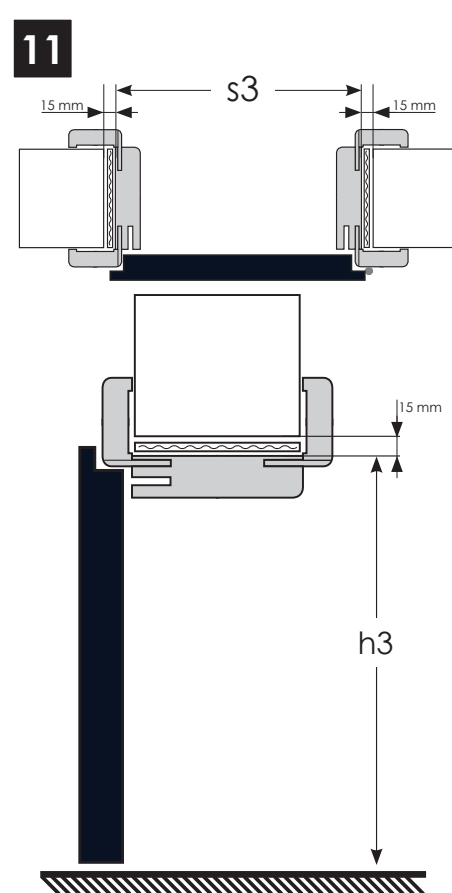
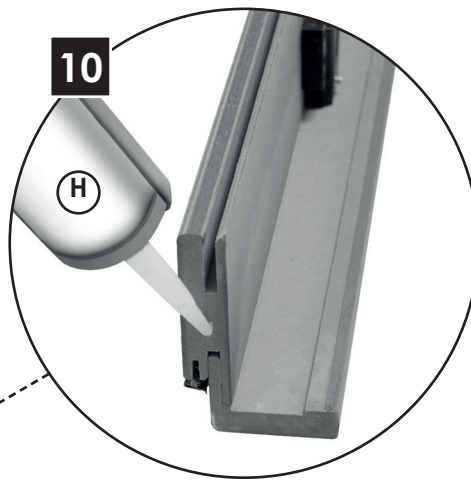
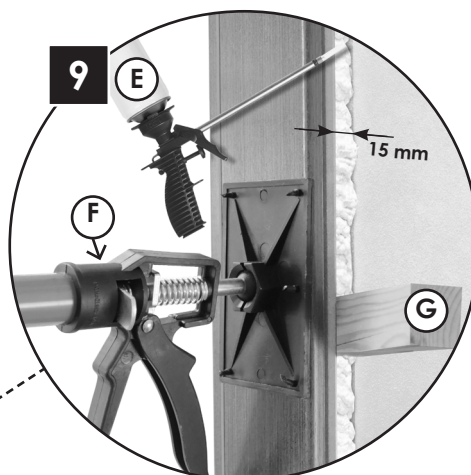
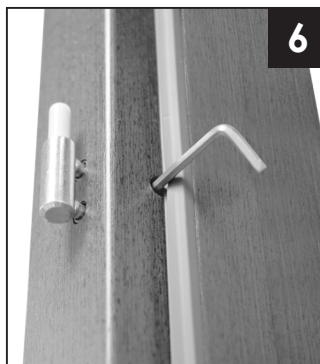
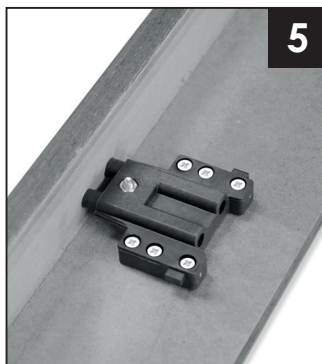
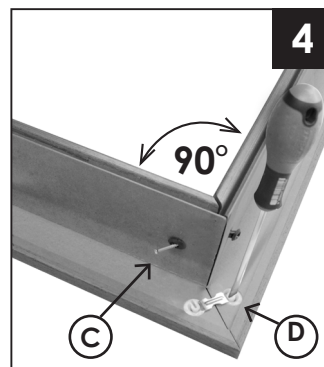
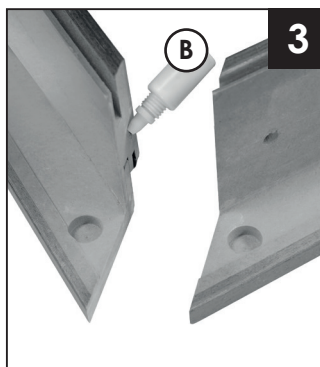
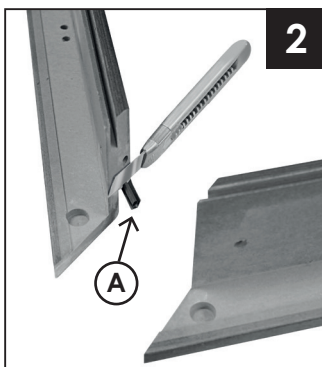
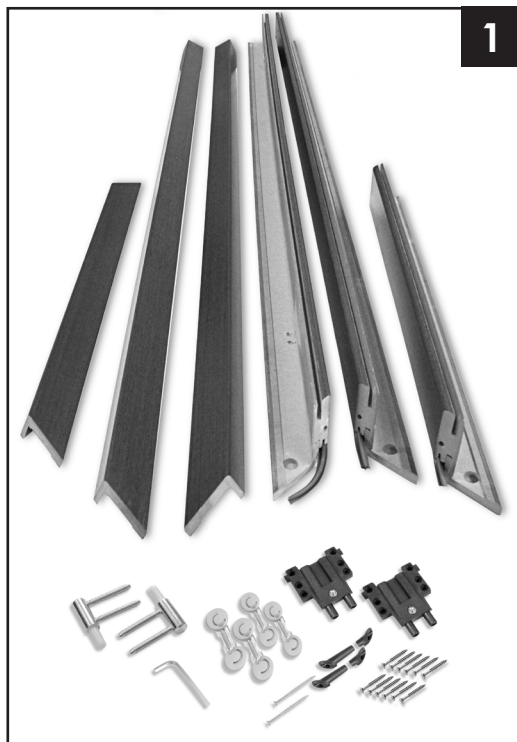
- Protect with silicone bottom edges of vertical elements of door frame and angle architrave.
- Insert the assembled door frame into the wall opening, using wedges in order to obtain a 15 mm gap between the door frame and the wall and remembering the LEFT or RIGHT function (direction) **Fig.9**.
- At the height of lower and upper hinges and the lock insert 3 struts and tighten them using wedges **Fig.8**.
- Check the horizontal and vertical position of the door frame.
- In order to check, if the door frame is installed properly, hang up the door leaf and check its adherence to the door frame.
- Join the inserted and protected door frame to the wall using PU foam. Apply the foam in the gap between the wall and the frame at the height of the struts and into two upper corners **Fig.9**.
- After 24 hours remove struts and wedges, then the excess mounting foam.
- Install the adjustable angle architrave into the door frame.
- In case of installing door frames in high humidity areas (e.g. bathroom), all contact points of the door frame to the floor and the wall should be sealed with silicone **Fig.10**.



ATTENTION! It's not allowed to use paints or water-based varnishes for finishing of unpainted surfaces



ADJUSTABLE DOOR FRAME INSTALLATION INSTRUCTIONS



s3 - outer width of door frame
h3 - outer height of door frame

(A) SEAL

(C) TWO-ELEMENT
CONNECTOR

(E) PU foam

(G) WEDGE

(B) GLUE

(D) CLAMP

(F) STRUT

(H) SILICONE